

PART OF WARDS 18 & 19 City of Boston.

Scale 100 ft. to the Inch.

21

20

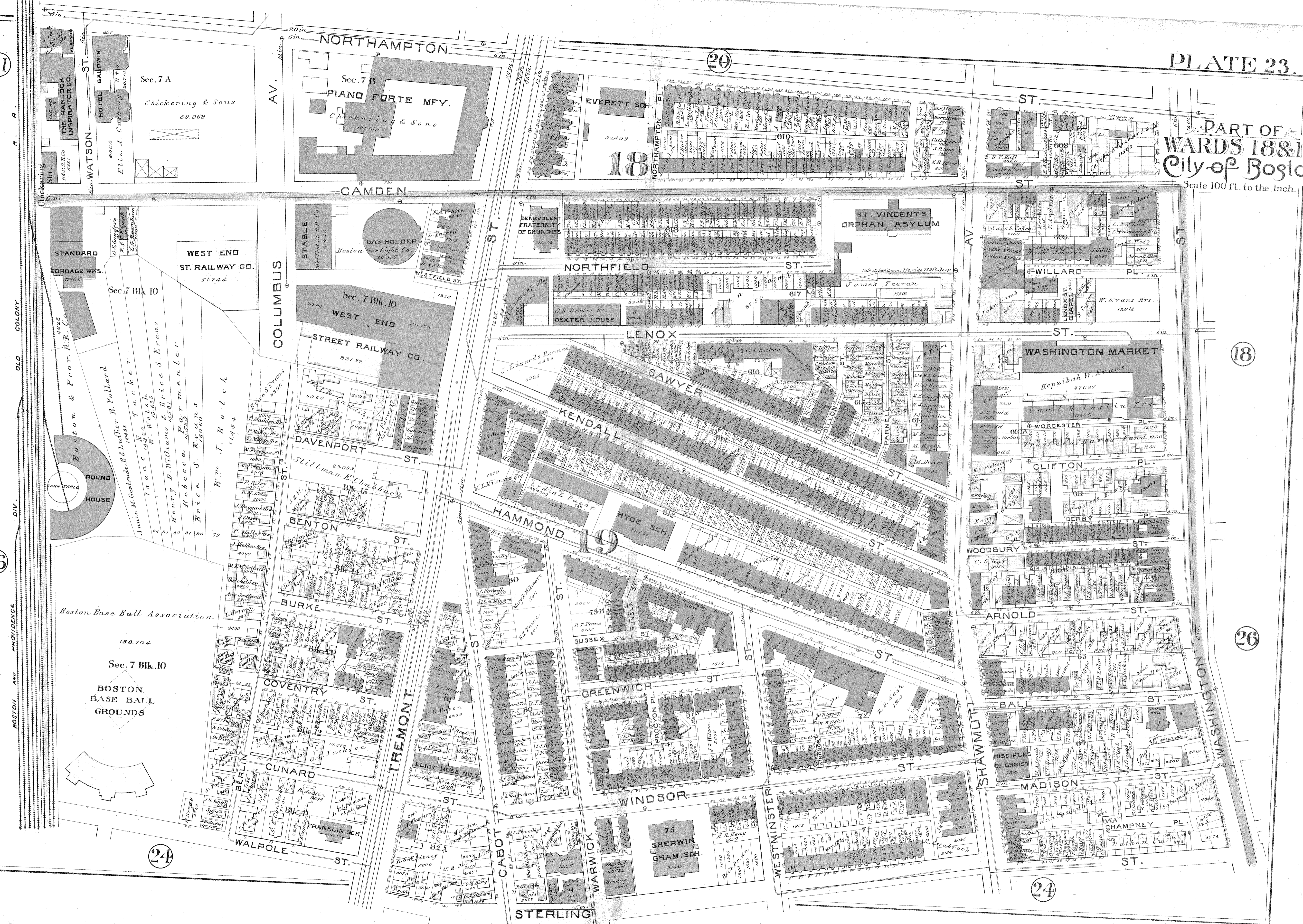
18

26

24

24

36



OLD COLONY

BOSTON AND PROVIDENCE

STANDARD GORDAGE WKS. 37736  
 WEST END ST. RAILWAY CO. 51.744  
 Sec. 7 Blk. 10  
 Boston & Prov. R.R. Co.  
 Round House  
 Boston Base Ball Association  
 188.704  
 Sec. 7 Blk. 10  
 BOSTON BASE BALL GROUNDS

ST. RAILWAY CO. 51.744  
 Sec. 7 Blk. 10  
 WEST END ST. RAILWAY CO.  
 ST. RAILWAY CO. 821.32  
 Sec. 7 Blk. 10  
 WEST END ST. RAILWAY CO.  
 BENTON ST.  
 BURKE ST.  
 COVENTRY ST.  
 CUNARD ST.  
 WALPOLE ST.  
 TREMONT ST.

EVERETT SCH. 32403  
 BENEVOLENT FRATERNITY OF CHURCHES  
 ST. VINCENT'S ORPHAN ASYLUM  
 NORTHFIELD ST.  
 LENOX ST.  
 SAWYER ST.  
 KENDALL ST.  
 HAMMOND ST.  
 HYDE SCH. 24734  
 SUSSEX ST.  
 GREENWICH ST.  
 WINDSOR ST.  
 WESTMINSTER ST.  
 SHAWMUT ST.  
 MADISON ST.  
 STERLING ST.

WASHINGTON MARKET  
 CLIFTON PL.  
 ARNOLD ST.  
 BALL ST.  
 MADISON ST.  
 CHAMPNEY PL.  
 WASHINGTON ST.